



Solitaires Enhanced

»» Classic Twist



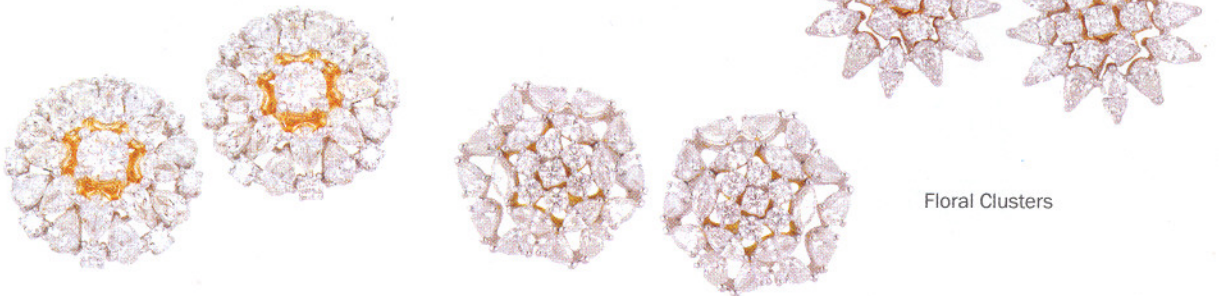
'Star Jewellery revitalises standard designs in their Classic Replayed line. The ubiquitous seven-stone floral cluster is given a new twist with the stylish use of fancy stones, while the classic solitaire is given a new facet in Solitaires Enhanced. Interchangeable jackets enhance solitaire stud earrings, whereas solitaire rings are perked up with ornamental shanks and halos. The Bands Galore line presents the classic single band ring in mesmerising stackable variations.

The Classic Replayed collection encompasses must-have jewellery pieces that add a touch of sophistication to your traditional as well as Western attire. ■

Bands Galore



Solitaires Enhanced



Floral Clusters